



# GAT MONTHLY MEMBERSHIP PROGRESS REPORT

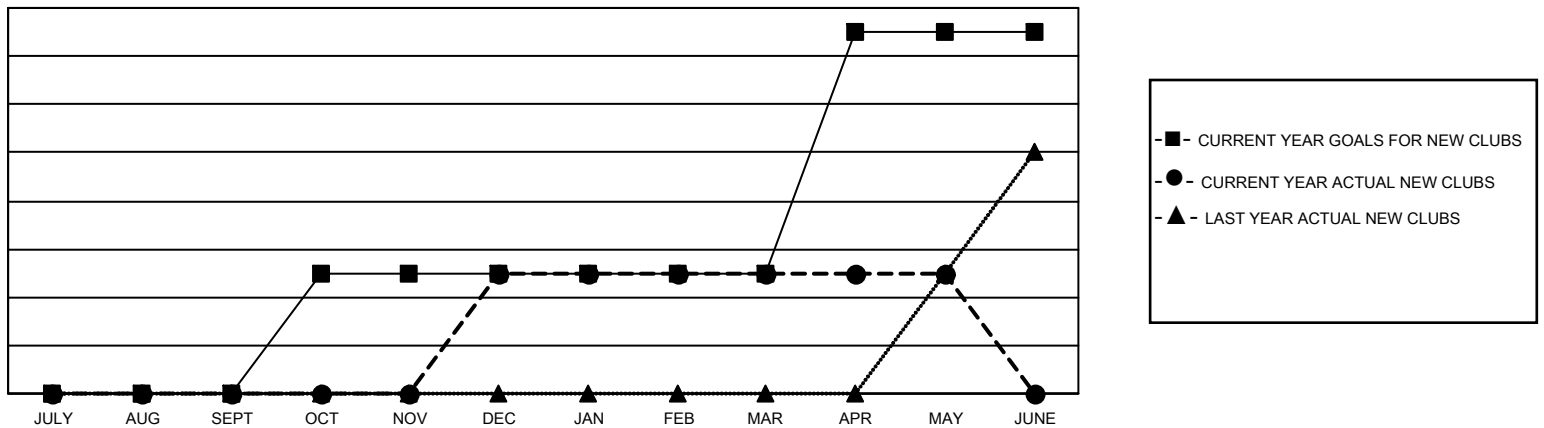
Results as of: 5/31/2022

Multiple District 22

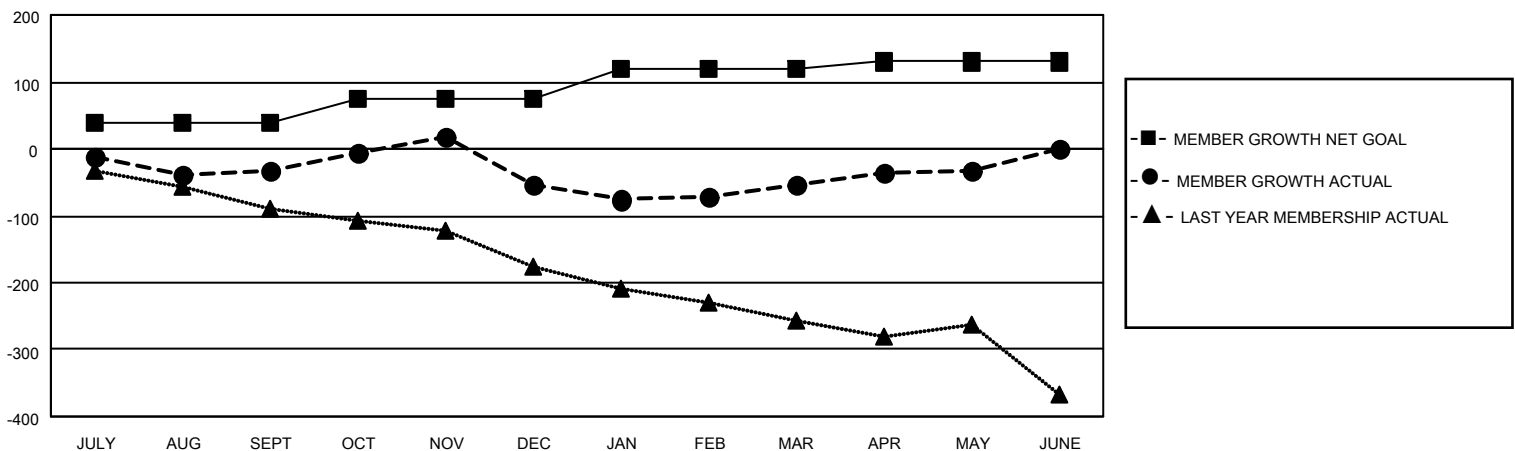
LOCATION: MARYLAND

Clubs				Members			
RESULTS FOR 2021-2022				RESULTS FOR 2021-2022			
QUARTER	NEW CLUB GOAL	NEW CLUBS	DROPPED CLUBS	QUARTER	MEMBER GROWTH NET GOAL	MEMBER GROWTH ACTUAL	DROPPED MEMBERS ACTUAL (including transfers)
JULY/AUG/SEPT	0	0	2	JULY/AUG/SEPT	40	129	147
OCT/NOV/DEC	1	1	2	OCT/NOV/DEC	35	205	211
JAN/FEB/MAR	0	0	1	JAN/FEB/MAR	45	140	129
APR/MAY/JUNE	2	0	0	APR/MAY/JUNE	10	94	63

GOALS AND ACTUAL NEW CLUBS CUMULATIVE



GOALS AND ACTUAL MEMBERS CUMULATIVE



DROPPED CLUBS: 5

119 CLUBS OF 209 ADDED 1 OR MORE NEW MEMBERS

## GENDER DISTRIBUTION

MALE	3,726 (62.81%)
FEMALE	2,206 (37.19%)
NON BINARY	0 (0.00%)
PREFER NOT TO ANSWER	0 (0.00%)

## DROPPED MEMBERS

DECEASED	145
CLUB CANCELLED	27
OTHER	378
TOTAL	550

[CLICK HERE FOR CUMULATIVE MEMBERSHIP DATA](#)

TOTAL FAMILY UNIT MEMBERS	1,112
FAMILY MEMBERS PAYING HALF DUES	579